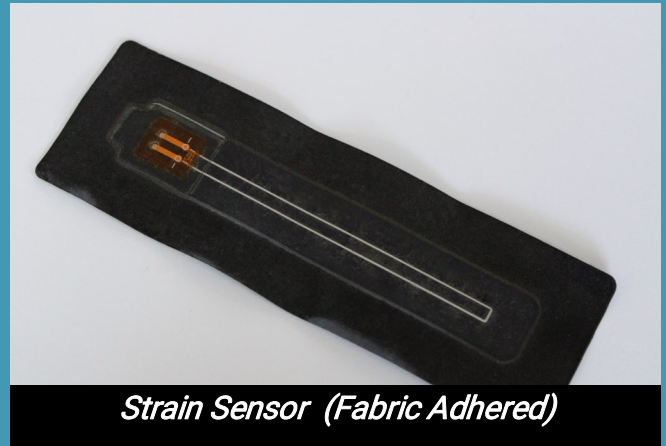
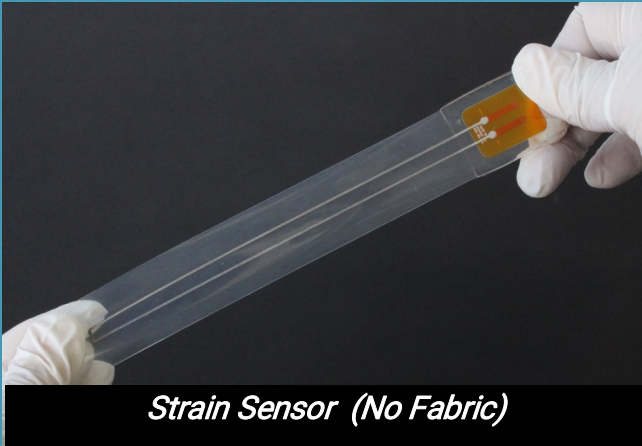


## Washable Strain Sensor

- Made with Liquid Wire's proprietary fluid phase, metal gel conductor encapsulated in thermoplastic polyurethane (TPU)
- Capable of being stretched 30% for up to 30,000 cycles
- Minimal hysteresis and linear resistance change during stretch
- TPU and metal gel properties ensure fatigue-free behavior
- Easily embedded into customer preferred fabric layup
- Durable and launderable up to 50 wash-dry cycles



Property	Value
Minimum Bend Radius	1 mm
Max Stretch <sup>†</sup>	30 %
Target Resistance <sup>††</sup>	< 4.5 $\Omega$
Gauge Factor	1.1–1.45
Resistivity	~ 4 $\mu\Omega\text{m}$
Temperature Range <sup>†††</sup>	0–100 °C
<sup>†</sup> Dependent on the encapsulating substrate (TPU) <sup>††</sup> Tunable resistance, dependent on trace length and width <sup>†††</sup> Specific to substrate used (TPU)	

